

ECONOLINE

PANEL DOOR

aliplast
aluminium systems



panel doors

Econoline Panel Door

- aluminium system without thermal insulation used to design panel doors
- the supporting structure of the panel door system is the Econoline system
- the panel system is intended for the design of internal structures (doors) in residential buildings, public buildings
- flush plane of the frame and panel glued to the sash (panel glued on the outside or on both sides)
- the system features a wide range of filling panels, available in a variety of designs and colours
- a wide selection of hardware available on the market
- wide range of colours – RAL palette (Qualicoat 1518), textured colours, Aliplast Wood Colour Effect – wood-like colours, Aliplast Loft View – colours imitating stone surfaces (Qualideco PL-0001), anodised colour (Qualanod 1808), bi-colour

ECONOLINE

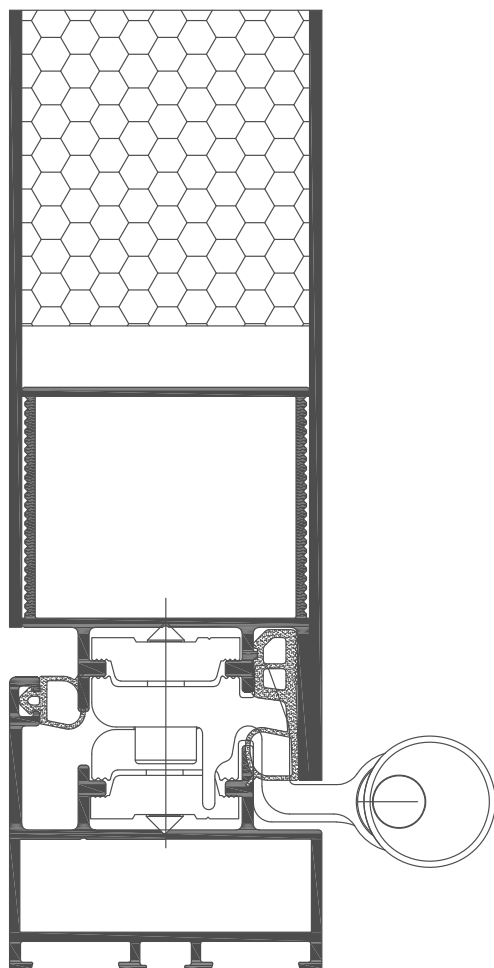
PANEL DOOR

aliplast
aluminium systems

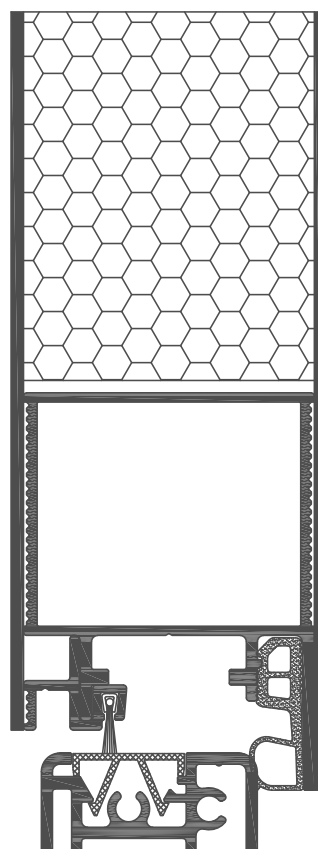
panel doors

technical specification

system	material	depth of frame	depth of sash	infill thickness	door type	acoustics
EL PD	aluminium	51 mm	51 mm	51 mm	turn-only	32 (0,-2) dB



cross-section of the EL PD panel door on the hinge side
(EL1624 + EL215)



cross-section of the threshold in the Econoline Panel Door system
(EL091 + EL1624)

i Aliplast Sp. z o.o. is not a manufacturer of overlay panels for panel doors and does not offer them for sale.